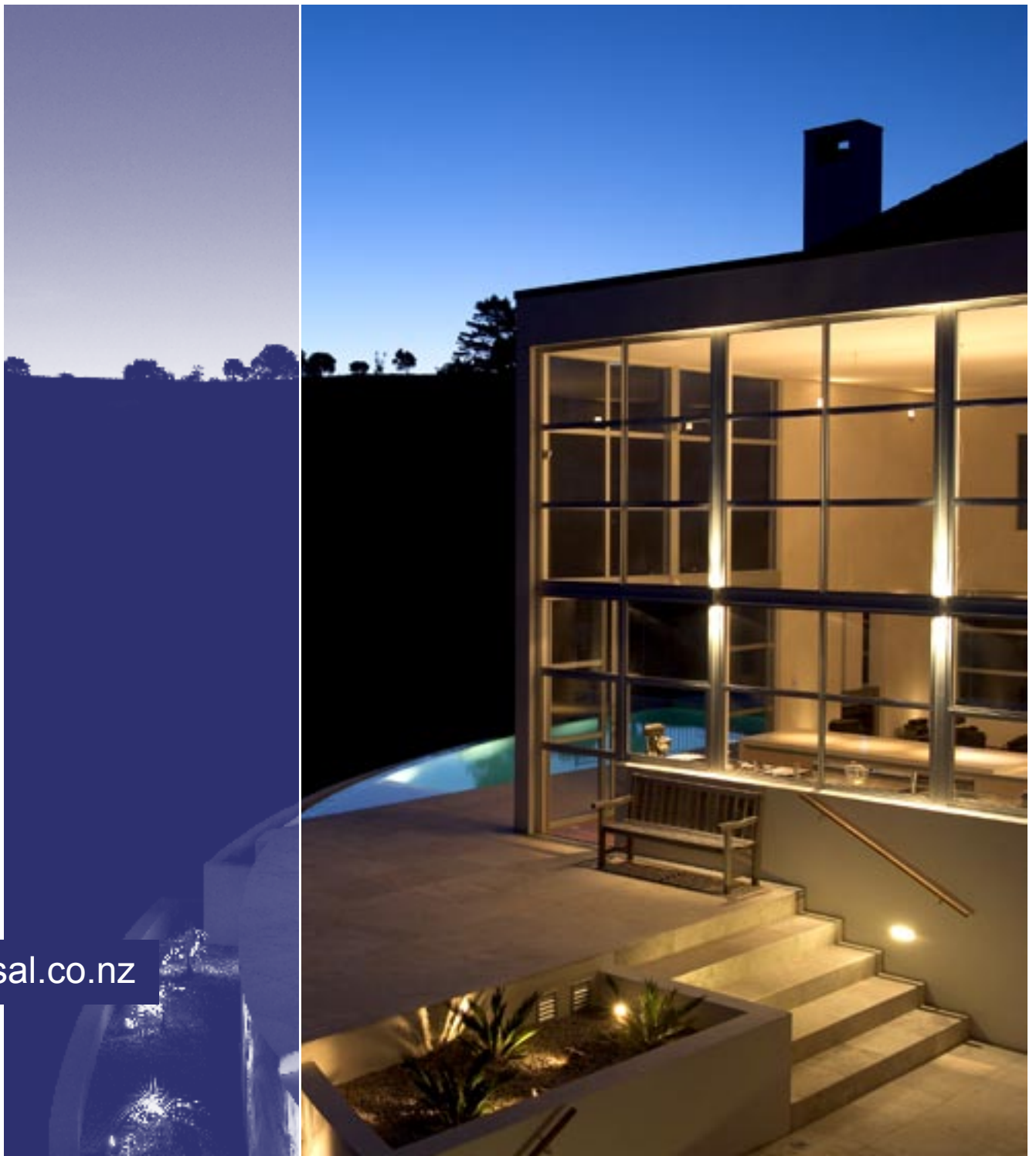


Intellisys Show Home Gulf Harbour

C-Bus Control and Management

Case Study



clipsal.co.nz

Living on the Edge

The Intellisys show home is certainly a house on the edge – in more ways than one. Magnificently nestled on the edge of a cliff face, it possesses amazing sea views, and is surrounded by spectacular scenery and backed by an elegant golf course. Internally, the house itself is also on the edge – the cutting edge of design, technology and quality, containing features of new-age systems and opulent accessories.

A concept over four years in the making, every product and material used in the house was extensively researched and carefully selected. The end result is a luxurious yet comfortable home, which includes Italian stone tiles and terracotta roofing, German quality kitchen equipment, marble and basalt stone basin tops, designer bathroom fittings, oiled Merbau floors and white oak timber fitout throughout to name but a few features.

The owner and founder of Intellisys, Des Dass and his son Rohan managed and planned the project personally, spending 2 long years researching and designing their new home, which then took another 2 years to build. Along the way they enlisted the help of an architect, a lighting designer and various consultants to help with their selections and designs - even a fire station door manufacturer, for the exquisite custom-made garage doors.

However, with a technical background in computer networking, Des was always going to research and select the home automation system personally. After evaluating all the available automation systems he chose Clipsal C-Bus, seeing it as the future of automation, especially with the vast investments being made by Clipsal into product design and future resources.

His timing couldn't have been better either, as while their home was nearing completion, so were a number of innovative new C-Bus products, including the aesthetically pleasing 'pure glass' Saturn key inputs and the highly functional Colour Touch Screen, which have been incorporated into the home.

The house contains 148 electrical circuits, and features motorised blinds, a 6 zone

irrigation system, multi-zone under-floor heating, central locking, a heated pool and spa, home theatre plus various other electrical accessories and features, all of which can be controlled via C-Bus output units.

The new C-Bus Colour Touch Screen (complete with logic functions) has been used to create many clever scenes and schedules – regular automated occurrences, dependent on issues such as time, date, or other sensor readings.

One important schedule controls the electric blinds. As the house features many large glass areas to take full advantage of the spectacular views, sun strike tends to be an issue mid-afternoon. To remove this annoyance and protect their beautiful home from sun fading, the blinds have been set to lower in the affected areas at the appropriate time. The blinds will then remain closed until the following morning, when they will automatically raise themselves again.

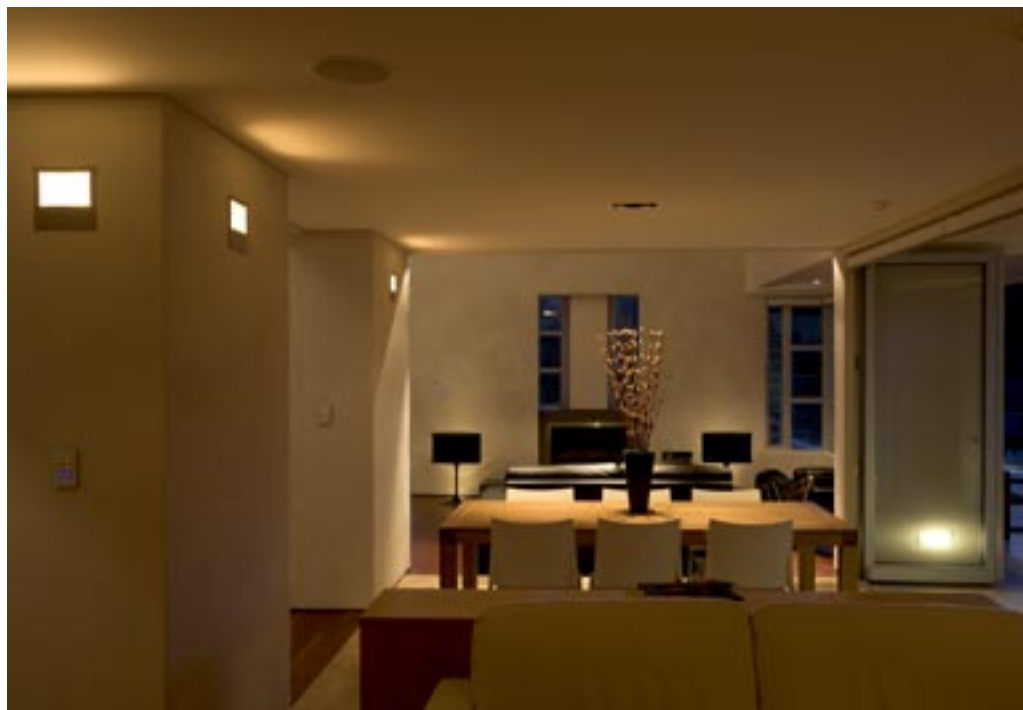
There is also scheduling for the irrigation system to ensure the garden remains healthy and lush, including varied watering levels for the four different seasons. For example, from the rainy winter months to the dryer summer months the watering will gradually increase. A rain sensor has also been incorporated however, to avoid over or under watering due to unseasonable rain showers or dry periods.

Other items on various daily schedules include the heated towel rails, bathroom de-misters and fans, the pool and spa pumps and heaters, the gas under-floor heating system and the hot water cylinders.

Another clever feature, operated from the Colour Touch Screen or locally at the Saturn key inputs, is the central locking system. A plan of the entire house and all exterior doors can be viewed from the colour touch screen, showing which areas are locked or unlocked at any given time. With a simple screen press, the entire house can be secured, or the gate and entrance door can be unlocked for guests about to arrive.

In the generous living and outdoor entertainment areas, numerous scenes have been set up on the Saturn key inputs, such as a party scene or dinner scene, plus quieter scenes for reading or relaxing.

These scenes turn on or dim down the appropriate lighting, as well as the water feature in the entrance way (complete with its own feature lighting sequences) or even the gas fire places at either end of the living area. These scenes are complemented by Windows Media Centre, controlling the music and entertainment - all conveniently from hand held remote controls.



No matter how late a night is spent entertaining downstairs, the staircase to the upper levels can always be traveled with ease due to inventive use of C-Bus PIR sensors. With one sensor positioned to pick up movement at either end of the staircase, subtle down-lights turn on to guide you up or down the stairs, then slowly time out behind you.

In the peace and quiet of the bedrooms and ensembles, personal preferences for wake up and good night scenes have been set, as well as practical scenes for a bit of late night television or reading – all of which can also be controlled from the convenience of a remote control. The walk in wardrobe has been designed to ensure it receives no natural light (again avoiding sun fade), so a sensor works in the area to ensure appropriate lighting at any time of day.

The crowning glory of the house though would have to be the spectacular Home Theatre room. Featuring a sophisticated LCOS projection system and comfortable leather armchairs on raised levels, the top-of-the-line 7.1 surround sound system ensures a memorable experience whether watching movies or enjoying music concerts.

Operated from the local Touch Screen or a convenient hand held remote control, at the press of a button the start up scene commences – the blinds lower, and a fascinating lighting sequence plays around the room while the selected DVD loads, the projector and amplifier turns on as the main lighting dims down.

Further integration by Intellisys allows the control and surveillance of the house via the Internet, from anywhere in the world. This was specifically developed as a great option for homeowners who travel a lot or own holiday/weekend homes.

The house and the C-Bus system have been carefully designed and implemented for ultimate enjoyment and ease of use. From the basic use of sensors to turn on lighting automatically when you enter hallway, to the complex scheduling and scenes for entertaining, it's easy to take for granted the convenience of an automated home.

